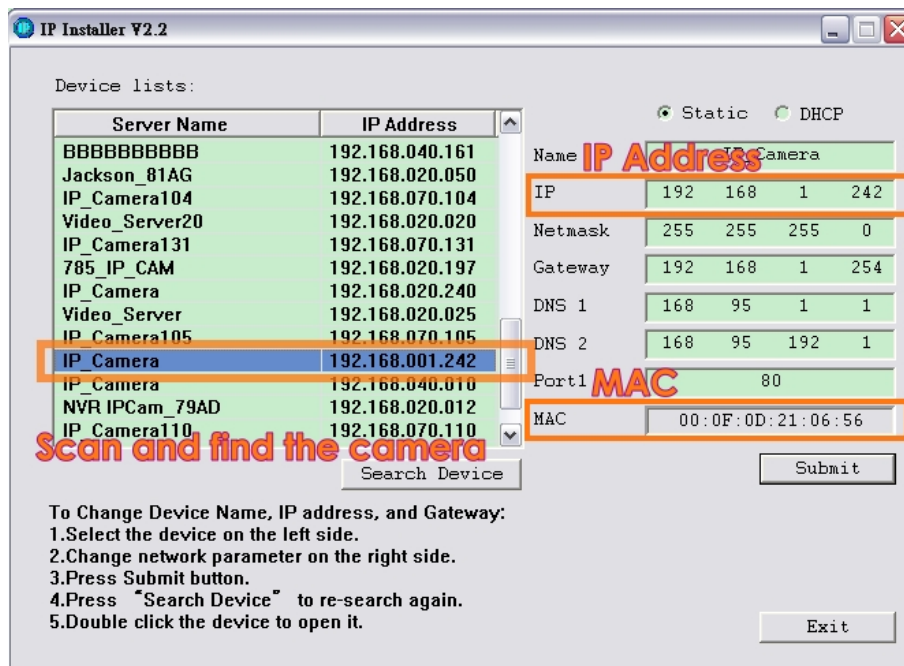


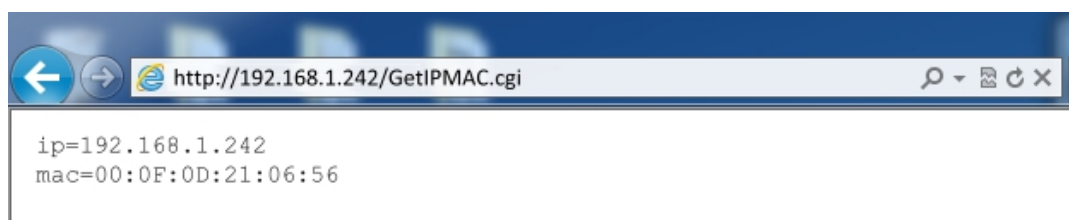
## What if you forget the camera password

If you forgot the password of your IP camera, you can follow the procedure below to generate a universal password.

1. First, you need to know the IP address and MAC of your IP camera. You can use IP installer to scan the LAN, and see the IP address and MAC on the side column.



Or, if you already know the IP address of camera: Open the web browser, key in "http:// (IP address) /GetIPMAC.cgi" and press enter. The IP address and MAC will be displayed on browser.



2. Find the .html file named "Universal Password" in CD-ROM. Click to open it.



3. Key in the camera IP address in "IP Adder." column and MAC in "MAC" column, and then click "encoder". You will see a set of username and password appear, as below:

IP Address: 192.168.1.242  
MAC: 00:0F:0D:21:06:56  
**UserName**  
C90848  
**Password**  
CNCE\_U6KLA  
encoder

The universal username and password are generated from the IP address and MAC you key in, so if you change the camera IP address, the universal password changes, too.

4. Take the picture for example, the universal username is “C90848” and password is “CNCE\_U6KLA”. Use them to log in the camera.



5. Now you are logging in as administrator. Turn to User Management page. The use of universal password does not affect the previous user setting, so the administrator account password does not change until you edit it. Please click “Edit” to give a new administrator password.

System Information

User Management

System

System Update

IP Setting

Advanced

PPPoE & DDNS

Server (Mail,FTP...)

Network

Image Setting

Video Setting

AV Setting

Audio

Event Setting

Schedule

I/O Setting

Log List

Event

Anonymous User

Add User

Username:

Password:

Confirm:

User List

Username	User Group	Modify	Remove
admin	Administrator	<div>Edit</div>	-----
hello	Guest	<div>Edit</div>	<div>Remove</div>
test	Guest	<div>Edit</div>	<div>Remove</div>

User\_Setting - Google Chrome

about:blank

User Setup

Username: admin

Password:

Confirm:

OK

Set up new password